

# Fabric collection 2021



## Alice 991463

Composition: 51% Polyester,  
42% Acrylic, 7% Cotton  
Price group: A  
Care instr:   
Martindale: 52.000  
Lightfastness: 5  
Pilling: 4-5  
Note: Oekotex



Petrol 45



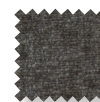
Midnight Blue 48



Slate 49



Grey 77



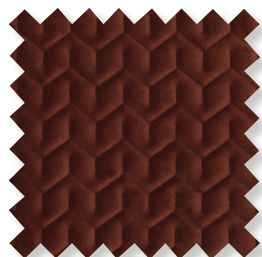
Mole 63



Beige 62



Cream 03



## Ally Quilt 991465

Composition: 100% Polyester  
Price group: C  
Care instr:   
Martindale: 50.000  
Lightfastness: 4  
Pilling: 4-5  
Note: Fabric is quilted.  
For Furninova only



Slate 49



Plum 58



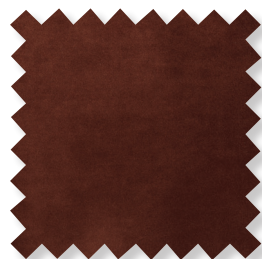
Lavendel 55



Taupe 64



Grey 77



## Ally Plain 991466

Composition: 100% Polyester  
Price group: C  
Care instr:   
Martindale: 50.000  
Lightfastness: 4  
Pilling: 4-5  
Note: Colours are matching to Ally Quilt.  
For Furninova only



Slate 49



Plum 58



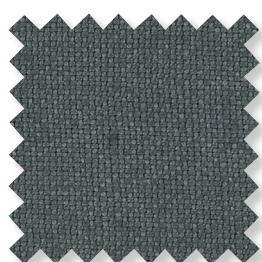
Lavendel 55



Taupe 64



Grey 77



## Alyssa 991386

Composition: 100% Linen  
Price group: C  
Care instr:   
Martindale: 20.000  
Lightfastness: 4-5  
Pilling: 4-5  
Note: For loose cover models only.



Snow 00



Sand 09



Mint 22



Light Blue 42



Petrol 45



Light Grey 72



Dark Grey 77

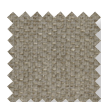


## Axis 991457

Composition: 100% Polyester  
Price group: C  
Care instr:   
Martindale: 90.000  
Lightfastness: 5-6  
Pilling: 5  
Note: Oekotex, Efficiency



Cream 03



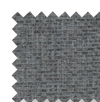
Nature 09



Peach 32



Green 22



Grey 77



Mole 63

# Fabric collection 2021



## Azure 991427

Composition: 57% Acrylic, 43% Polyester  
 Price group: A  
 Care instr:   
 Martindale: 110.000  
 Lightfastness: 5  
 Pilling: 4  
 Note: Oekotex



Sea Grass 21



Cream 03



Taupe 64



Pink 31



Yellow 18



Light Blue 41



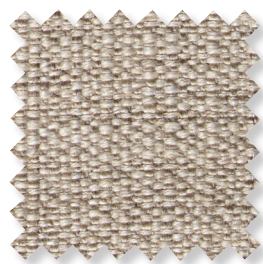
Dark Blue 48



Stone 72



Dark Grey 78

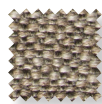


## Bardot 991428

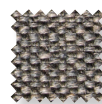
Composition: 59% Acrylic, 23% Polyester, 13% Viscose, 5% Linen  
 Price group: B  
 Care instr:   
 Martindale: 50.000  
 Lightfastness: 4  
 Pilling: 4  
 Note: Oekotex



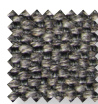
Nature 01



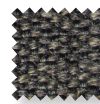
Taupe 64



Stone 72



Grey 77



Antracit 79



## Can 991347

Composition: 51,5 % Acrylic, 48,5 % Polyester  
 Price group: A  
 Care instr:   
 Martindale: 35.000  
 Lightfastness: 6  
 Pilling: 4  
 Note: Oekotex



Snow 00



Blue 47



Light Beige 60



Mole 63



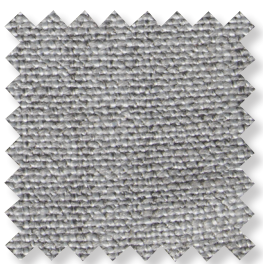
Light Grey 72



Grey 77



Night 89



## Casual 991443

Composition: 78% Polyester, 22% Cotton  
 Price group: B  
 Care instr:   
 Martindale: 100.000  
 Lightfastness: 5-6  
 Pilling: 4  
 Note: Fibre Guard, Oekotex



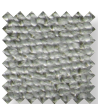
Ivory 03



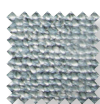
Taupe 63



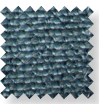
Mole 64



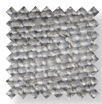
Mint 22



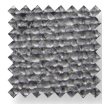
Light Blue 41



Petrol 45



Silver 72



Grey 75



Dark Grey 77



## Celine 991392

Composition: 100% Polyester  
 Price group: C  
 Care instr:   
 Martindale: 97.000  
 Lightfastness: 5  
 Pilling: 4  
 Note: Oekotex  
 For Furninova only



Emerald 27



Mint 22



Ice 46



Petrol 45



Midn. Blue 48



Taupe 64



Brown 65

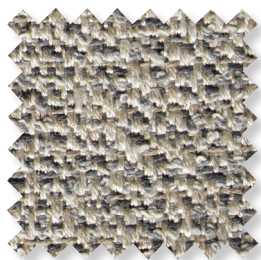


Grey 77



Antracit 79

# Fabric collection 2021

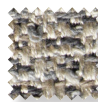


## Chanel 991434

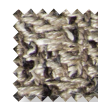
Composition: 30% Viscose, 25% Cotton, 20% Polyester, 20% Linen, 5% Other fibres  
 Price group: C  
 Care instr:   
 Martindale: 25.000  
 Lightfastness: 5  
 Pilling: 3-4  
 Note: For Furninova only



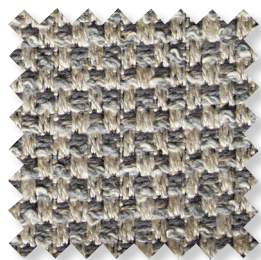
Nature 01



Grey 77



Mole 63

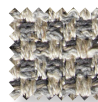


## Coco 991435

Composition: 30% Viscose, 25% Cotton, 20% Polyester, 20% Linen, 5% Other fibres  
 Price group: C  
 Care instr:   
 Martindale: 25.000  
 Lightfastness: 5  
 Pilling: 3-4  
 Note: For Furninova only



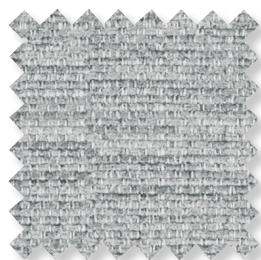
Nature 01



Grey 77



Mole 63



## Cortina 991108

Composition: 44% Acrylic, 42% Polyester, 14% Polypropen  
 Price group: A  
 Care instr:   
 Martindale: 26.500  
 Lightfastness: 5  
 Pilling: 4-5  
 Note: Oekotex



White 01



Snow 00



Sand 09



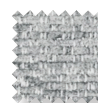
Dark Blue 48



Soft Grey 71



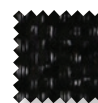
Light Grey 72



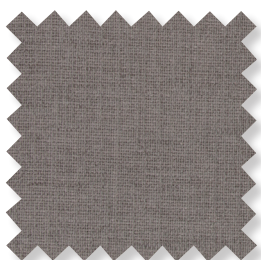
Silver 75



Grey 77



Night 89



## Degas 991363

Composition: 85% Polyester, 15% Cotton  
 Price group: C  
 Care instr:   
 Martindale: 30.000  
 Lightfastness: 5-6  
 Pilling: 4-5  
 Note: Efficiency, Oekotex



Nature 01



Ivory 03



Mole 63



Silver 75



Midnight Blue 48



Peach 32



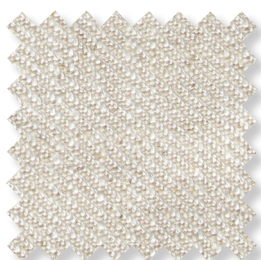
Terracotta 35



Grey 77

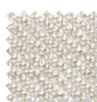


Antracit 79



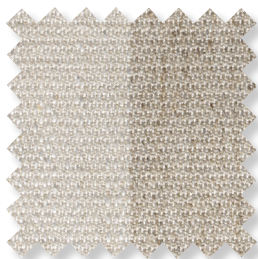
## Disa Plain 991447

Composition: 40% Viscose, 24% Linen, 24% Cotton, 12% Polyester  
 Price group: C  
 Care instr:   
 Martindale: 35.000  
 Lightfastness: 4-5  
 Pilling: 3  
 Note: Oekotex  
 For Furninova only



Nature 01

# Fabric collection 2021



## Disa L Stripe 992448

Composition: 39% Viscose, 25% Linen,  
20% Cotton, 16% Polyester

Price group: C

Care instr:

Martindale: 25.000

Lightfastness: 4-5

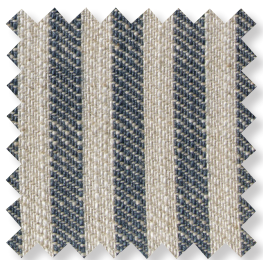
Pilling: 3

Note: Oekotex

For Furninova only



Nature 01



## Disa S Stripe 992449

Composition: 39% Viscose, 25% Cotton, 24%  
Linen, 12% Polyester

Price group: C

Care instr:

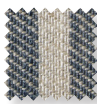
Martindale: 35.000

Lightfastness: 4-5

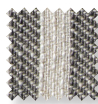
Pilling: 3

Note: Oekotex

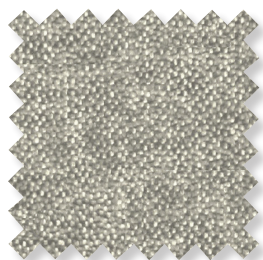
For Furninova only



Blue 47



Stone 72



## Divine 991122

Composition: 49% Polypropen,  
47% Polyester, 4% Cotton

Price group: C

Care instr:

Martindale: 58.000

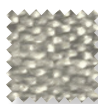
Lightfastness: 5-6

Pilling: 4-5

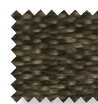
Note: Efficiency, Oekotex



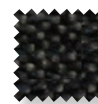
Ivory 03



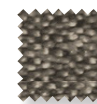
Beige 62



Mole 63



Blue 47



Grey 77



Antracit 79

new



## Dolce 991477

Composition: 73% crylic, 24% Polyester,  
3% Viscose

Price group: C

Care instr:

Martindale: 50.000

Lightfastness: 5

Pilling: 4

Note: Oekotex



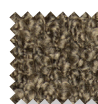
Cream 03



Sand 09



Beige 62



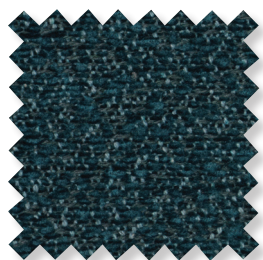
Mole 63



Rust 38



Gold 18



## Dylan 991458

Composition: 50% Cotton, 35% Polyacrylic,  
15% Polyester

Price group: C

Care instr:

Martindale: 40.000

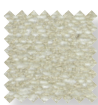
Lightfastness: 5-6

Pilling: 4-5

Note: Oekotex



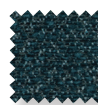
Snow 00



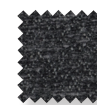
Cream 03



Stone 73



Petrol 45



Dark Grey 78

# Fabric collection 2021



## Eros 991070

Composition: 50,2% Acrylic,  
41,2% Polyester, 8,6% Viscose

Price group: B

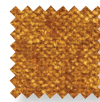
Care instr:

Martindale: 50.000

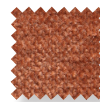
Lightfastness: 5

Pilling: 4

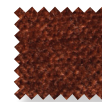
Note: Oekotex



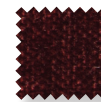
Mustard 17



Peach 32



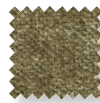
Bronze 64



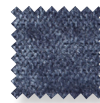
Burgundy 36



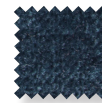
Plum 58



Seagrass 21



Ocean 42



Petrol 45



Forest 28



Midnight Blue48



Earth 67



Mole 63



Stone 73



Antracit 79



Night 89



## Evita 991373

Composition: 54,9% Polyester, 38,5% Acrylic,  
6,6% Viscose

Price group: B

Care instr:

Martindale: 25.000

Lightfastness: 5-6

Pilling: 4

Note: Oekotex



Snow 01



Pearl 02



Ivory 03



Cream 04



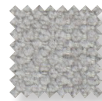
Nature 05



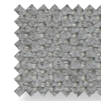
Sand 06



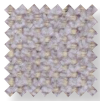
Soft Grey 07



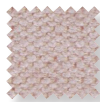
Light Grey 08



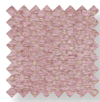
Silver 09



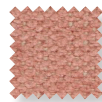
Soft Purple 10



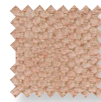
Soft Pink 11



Light Pink 12



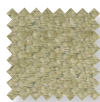
Peach 13



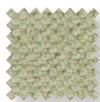
Salmon 14



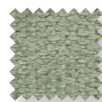
Lemon 15



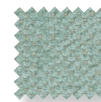
Pear 16



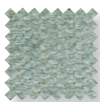
Lime 17



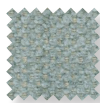
Green Tea 18



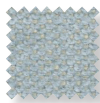
Aqua 19



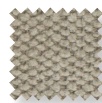
Ice 20



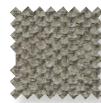
Sky 21



Baby Blue 22



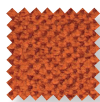
Light Beige 23



Taupe 24



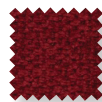
Mole 25



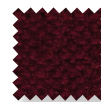
Orange 26



Strawberry 27



Wine 28



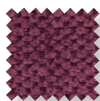
Plum 29



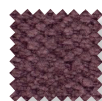
Raspberry 30



Pink 31



Purple 32



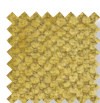
Lavendel 33



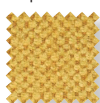
Aubergine 34



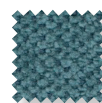
Forest 35



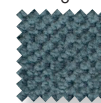
Banana 36



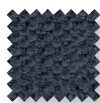
Sun 37



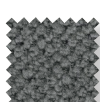
Ocean 38



Petrol 39



Blueberry 40



Concrete 41



Antracit 42



Cofee 43



Black 44

# Fabric collection 2021



## Flower Collection Bellona/ Lindsey

Composition: 54,4% Cotton, 45,5% Polyester,  
Price group: A  
Care instr:   
Martindale: 80.000  
Lightfastness: 4  
Pilling: 4-5



Bellona  
Grey/ Turquoise  
996326-42



Bellona  
Grey/ Purple  
996326-57



Lindsey  
Red/ Nature  
996325-35

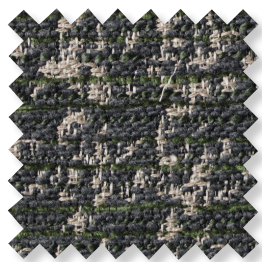


## Flower Collection Sunday

Composition: 100% Polyester,  
Price group: A  
Care instr:   
Martindale: 100.000  
Lightfastness: 4  
Pilling: 4

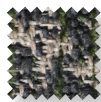


Sunday  
Grey/ Pink  
996328-31

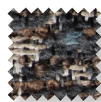


## Gabrielle 991436

Composition: 49% Cotton, 33% Polyester,  
12% Acrylic, 6% Other Fibres  
Price group: C  
Care instr:   
Martindale: 35.000  
Lightfastness: 4  
Pilling: 3-4



Emerald 27



Mole 63

new



## Gianni 991478

Composition: 77% Acrylic, 22% Polyester,  
1% Viscose  
Price group: C  
Care instr:   
Martindale: 50.000  
Lightfastness: 5  
Pilling: 4  
Note: Oekotex



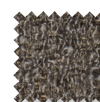
Cream 03



Sand 09



Mole 63



Grey 77



Charcoal 78



Bronze 19

new



## Henny 991479

Composition: 100% Polyester  
Price group: B  
Care instr:   
Martindale: 40.000  
Lightfastness: 4-5  
Pilling: 4-5  
Note: Oekotex  
For Furninova only



Nature 62



Taupe 63



Cognac 64



Chestnut 68



Dark Grey 79



Terracotta 35



Olive 26

# Fabric collection 2021



## Hombre 991346

Composition: 100% Polyester  
 Price group: B  
 Care instr:   
 Martindale: 50 000  
 Lightfastness: 4  
 Pilling: 5  
 Note: OekoTex



L Green 21



L Pink 30



L Beige 60



Mole 63



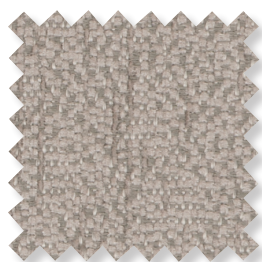
L Grey 72



Silver 75



D Grey 78



## Kate 991396

Composition: 100% Polyester  
 Price group: A  
 Care instr:   
 Martindale: 25.000  
 Lightfastness: 5  
 Pilling: 4-5  
 Note: OekoTex



Ivory 03



Sky 46



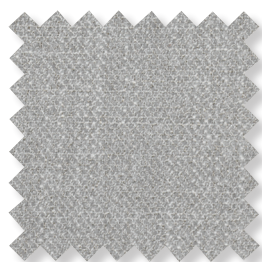
Stone 73



Silver 75



Dark Grey 78



## Laura 991464

Composition: 100% Polyester  
 Price group: B  
 Care instr:   
 Martindale: 50.000  
 Lightfastness: 5  
 Pilling: 5



Stone 72



Taupe 64



Pink 31



Ice 44



Petrol 45



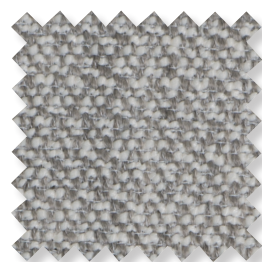
Cream 03



Sand 09



Grey 77



## Leone 991400

Composition: 85% Polyester,  
 15% Viscose  
 Price group: A  
 Care instr:   
 Martindale: 50.000  
 Lightfastness: 5  
 Pilling: 4  
 Note: For Furninova only



Stone 73



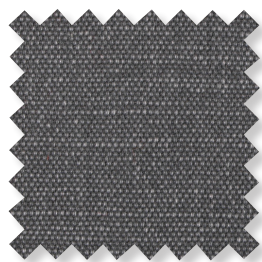
Silver 75



Grey 77



Antracit 79



## Malin 991432

Composition: 100% Cotton  
 Price group: A  
 Care instr:   
 Martindale: 30.000  
 Lightfastness: 4-5  
 Pilling: 4-5  
 Note: OekoTex  
 For Furninova Only



Snow 00



Petrol 45

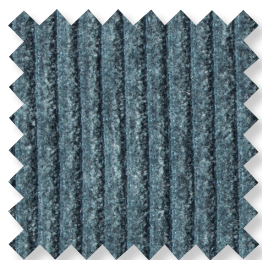


Taupe 64



Grey 77

# Fabric collection 2021



## Manchester 991445

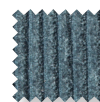
Composition: 47% Polyester, 36% Acrylic, 9% Wool, 8% Viscose  
 Price group: C  
 Care instr:   
 Martindale: 27.000  
 Lightfastness: 4  
 Pilling: 4  
 Note: Oekotex  
 For Furninova only



Peach 32



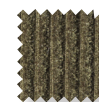
Orange 18



Turquoise 42



Petrol 45



Green 26



Grey 77

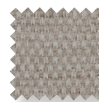


Antracite 79



## March 991385

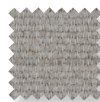
Composition: 52,1% Polyester, 47,9% Acrylic  
 Price group: A  
 Care instr:   
 Martindale: 35.000  
 Lightfastness: 5  
 Pilling: 4-5  
 Note: Oekotex



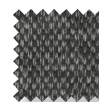
Sand 09



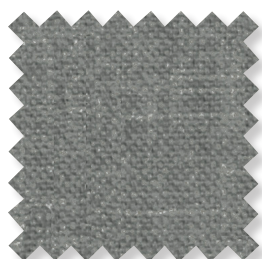
Soft Pink 31



Light Grey 72



Dark Grey 78

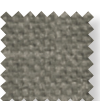


## Mariam 991345

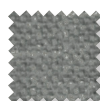
Composition: 100% Cotton  
 Price group: A  
 Care instr:   
 Martindale: 22 000  
 Lightfastness: 4  
 Pilling: 5  
 Note: Oekotex



Sand 09



Brown 65



Grey 77

new



## Marilyn 991476

Composition: 64% Acrylic, 36% Polyester,  
 Price group: B  
 Care instr:   
 Martindale: 50.000  
 Lightfastness: 5  
 Pilling: 4  
 Note: Oekotex



White 00



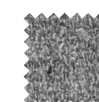
Nature 01



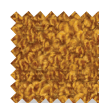
Beige 62



Brown 65



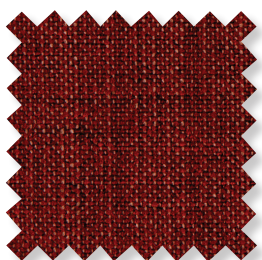
Silver 75



Mustard 17



Bronze 19



## Matiss 991362

Composition: 55% Polyester, 20% Viscose 15% Cotton, 10% Linen  
 Price group: C  
 Care instr:   
 Martindale: 35.000  
 Lightfastness: 5-6  
 Pilling: 4-5  
 Note: Oekotex



Snow 00



Nature 01



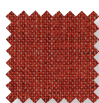
Sand 09



Soft Pink 31



D Blue 48



Peach 32



Terracotta 35



Petrol 45



L Grey 72



Grey 77



# Fabric collection 2021



## Megan 991402

Composition: 100% Polyester,  
Price group: A  
Care instr:   
Martindale: 100.000  
Lightfastness: 4-5  
Pilling: 3-4  
Note: Oekotex  
For Furninova only



Ivory 00



Light Beige 60



Soft Grey 71



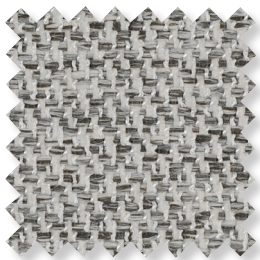
Stone 73



Dark Grey 78



Soft Pink 31



## Melange 991379

Composition: 42% Polypropylene,  
42% Polyester, 16% Cotton  
Price group: C  
Care instr:   
Martindale: 85.000  
Lightfastness: 5-6  
Pilling: 4-5  
Note: Oekotex



Ivory 09



Silver 75



Grey 77



Antracit 79



Night 89



## Mercedes 991429

Composition: 74% Acrylic, 26 Polyester,  
Price group: C  
Care instr:   
Martindale: 40.000  
Lightfastness: 4  
Pilling: 4  
Note: Oekotex



Cream 03



Taupe 64



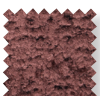
Stone 73



Dark Grey 78



Green 26



Aubergine 57



Blue 47



## Nancy 991120

Composition: 46% Acrylic,  
44% Polyester, 10% Cotton  
Price group: B  
Care instr:   
Martindale: 40.000  
Lightfastness: 5-6  
Pilling: 5  
Note: Oekotex



Nature 01



Sand 09



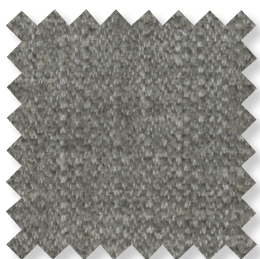
Soft Grey 71



Soft Pink 30



Soft Blue 47



## Nicole 991462

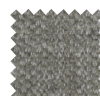
Composition: 93% Polypropylene, 7%  
Polyester  
Price group: B  
Care instr:   
Martindale: 27.000  
Lightfastness: 5  
Pilling: 4-5  
Note: Oekotex



Stone 73



Earth 67



Light Grey 72



Taupe 64



Dark Grey 78



Peach 32

# Fabric collection 2021



## Nomi 991464

Composition: 100% Polyester  
 Price group: A  
 Care instr: ©  
 Martindale: 50.000  
 Lightfastness: 4-5  
 Pilling: 4-5  
 Note: Oekotex



Light Grey 72



Ocean 46



Midn. Blue 48



Grey 77



Mole 63



Beige 62



Forest 28

new

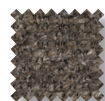


## Oliver 991475

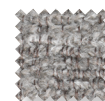
Composition: 59% Rolefin, 41% Polyester  
 Price group: A  
 Care instr: ©  
 Martindale: 25.000  
 Lightfastness: 6  
 Pilling: 4-5  
 Note: Oekotex  
 For Furninova only



Nature 01



Mole 63



Stone 73



Grey 77



## Paris 991467

Composition: 100% Polyester  
 Price group: A  
 Care instr: ©  
 Martindale: 27.000  
 Lightfastness: 5  
 Pilling: 4-5  
 Note: Oekotex



Emerald 27



Bronze 39



Petrol 45



Steel 49



Aubergine 57



L. Beige 60



Taupe 64



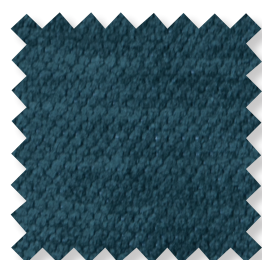
Brown 65



Grey 77

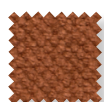


Black 89



## Peron 991405

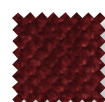
Composition: 54% Polyester, 39% Acrylic, 7% Viscose  
 Price group: A  
 Care instr: ©  
 Martindale: 20.000  
 Lightfastness: 5  
 Pilling: 4-5  
 Note: Oekotex



Bronze 01



Terracotta 02



Raspberry 03



Aubergine 04



Plum 05



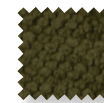
Dark Grey 06



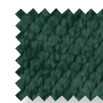
Antracit 07



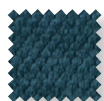
Olive 08



Dark Green 09



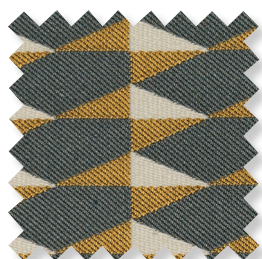
Teal 10



Petrol 11



Dark Blue 12



## Rossini 991459

Composition: 51% Polyester, 49% Viscose  
 Price group: C  
 Care instr: ©  
 Martindale: 25.000  
 Lightfastness: 5  
 Pilling: 4  
 Note: Oekotex  
 For Furninova only



Mustard 17



Petrol 45

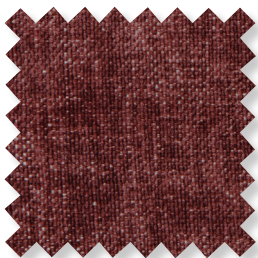


Aubergine 57



Grey 77

# Fabric collection 2021

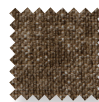


## Rubens 991390

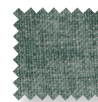
Composition: 59,7% Polyester, 34,4% Polyacrylic, 5,9% Viscose  
 Price group: C  
 Care instr:   
 Martindale: 35 000  
 Lightfastness: 5  
 Pilling: 4-5  
 Note: Oekotex



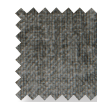
Sand 09



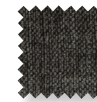
Taupe 64



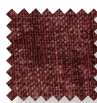
Eucalyptus 24



Grey 77



Graphite 78



Magnolia 55



## Russel 991460

Composition: 53% Acrylic, 23% Polyester, 13% Cotton, 11% Wool  
 Price group: B  
 Care instr:   
 Martindale: 30.000  
 Lightfastness: 5  
 Pilling: 4  
 Note: Oekotex



White 01



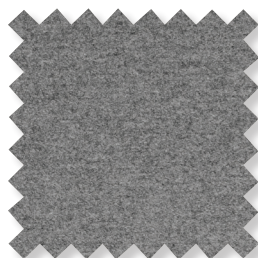
Chocolate 68



Charcoal 78



Anthracite 79

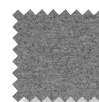


## Sheford 991383

Composition: 70% Wool, 20% Polyester, 5% Poliamide, 5% Other fibers  
 Price group: C  
 Care instr:   
 Martindale: 60.000  
 Lightfastness: 4-5  
 Pilling: 3-4



Stone 73



L Grey 72



Mole 63



D Grey 77



Forest 28



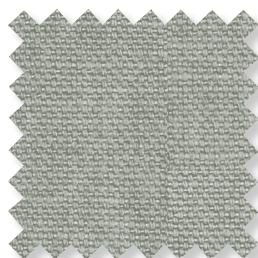
Mustard 17



Aubergine 57



D Blue 48



## Tristan 991817

Composition: 60% Cotton, 40% Linen  
 Price group: B  
 Care instr:   
 Martindale: 20 000  
 Lightfastness: 5  
 Pilling: 5  
 Note: Oekotex



Snow White 00



Sand 09



Beige 62



Mole 63

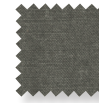


Stone 73

new



Dark Grey 78



Grey 77



## Triton 991361

Composition: 100% Polyester  
 Price group: B  
 Care instr:   
 Martindale: 84.000  
 Lightfastness: 6  
 Pilling: 4-5  
 Note: Easy Care, Oekotex



Ivory 03



Soft Green 22



Wine 36



Stone 73



Antracit 79



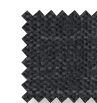
L Beige 60



Soft Blue 40

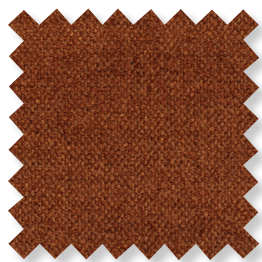


L Grey 71



Charcoal 78

# Fabric collection 2021



## Velvety 991456

Composition: 91% Polyester, 9% Cotton

Price group: C

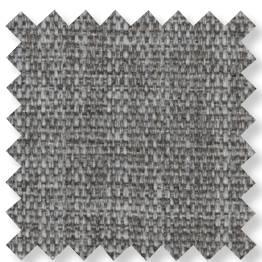
Care instr:

Martindale: 200.000

Lightfastness: 5-6

Pilling: 4-5

Note: Efficiency, Oekotex



## Venice 991468

Composition: 66% Polyester,  
34% Polypropylene

Price group: A

Care instr:

Martindale: 25 000

Lightfastness: 5

Pilling: 4-5

Note: Oekotex



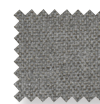
Light Beige 60



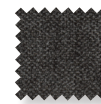
Taupe 62



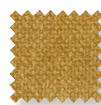
Ivory 03



Stone 73



Mole 63



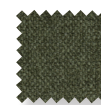
Mustard 17



Peach 32



Bronze 64



Green 22



D. Green 28



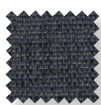
D. Blue 48



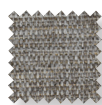
Dark Teal 29



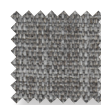
D. Grey 78



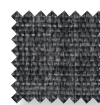
D Blue 48



Beige 62



Stone 73



D Grey 78